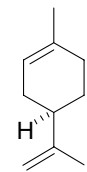
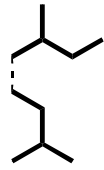
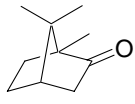
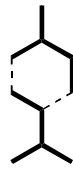


Geraniol



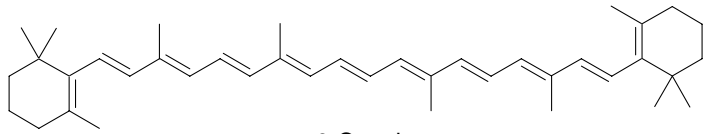
Limonen



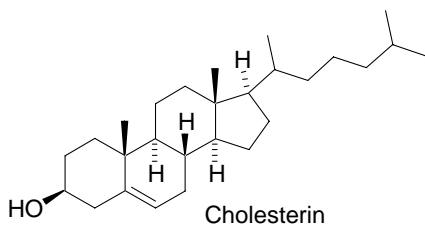
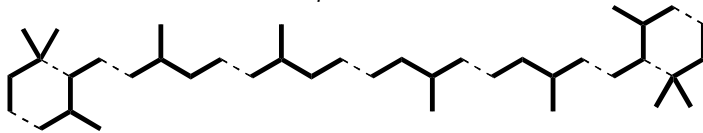
Campher



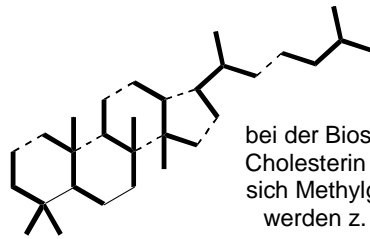
Pinan



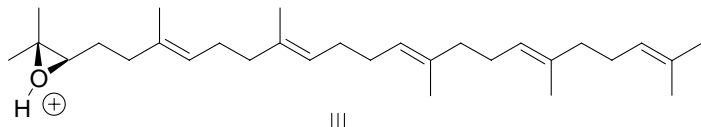
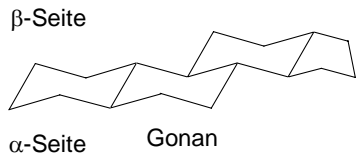
β -Carotin



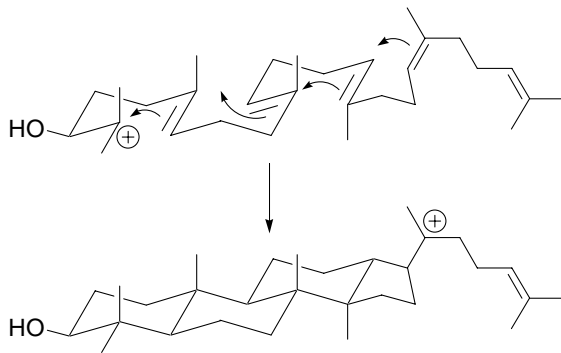
Cholesterin



bei der Biosynthese von Cholesterin verschieben sich Methylgruppen und werden z. T. entfernt

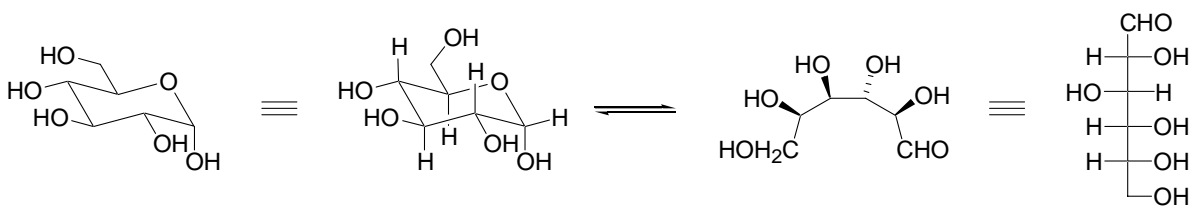
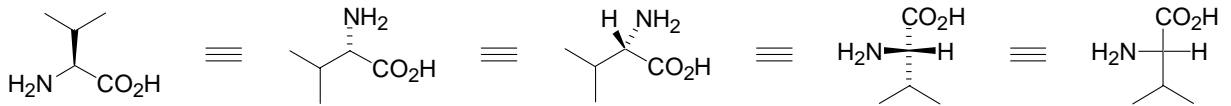


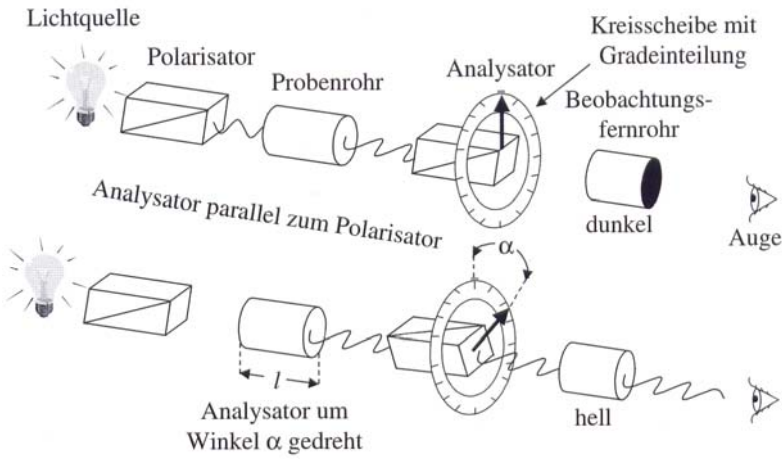
2,3-Epoxysqualen



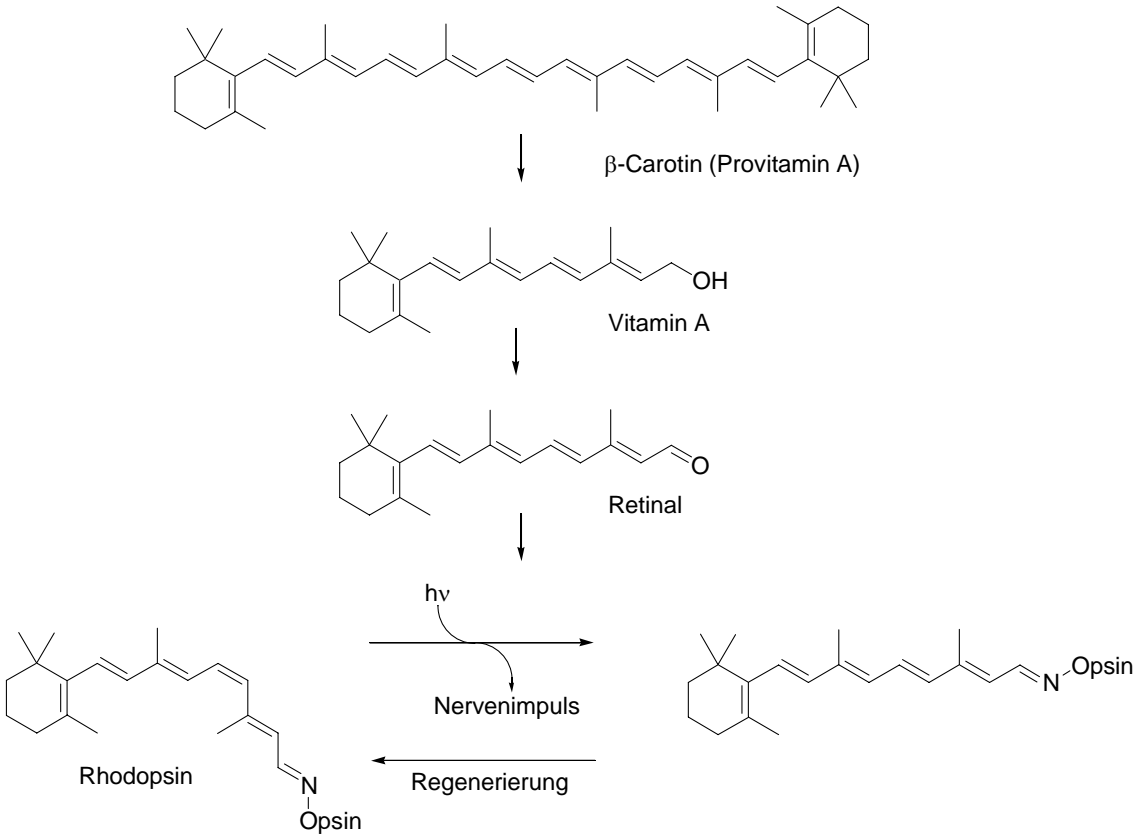
3-β-Hydroxy-Dammaran-20-Kation

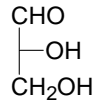
↓ ↓ ↓
 Cholesterin u. a. Steroide



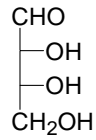


α = gemessener Drehwinkel in Grad
 l = Länge des Probenrohrs in Dezimeter

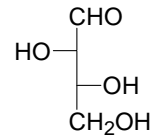




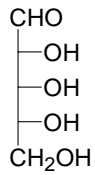
D-Glycerinaldehyd



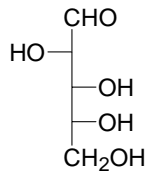
D-Erythrose



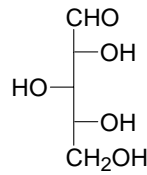
D-Threose



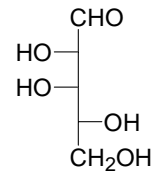
D-Ribose



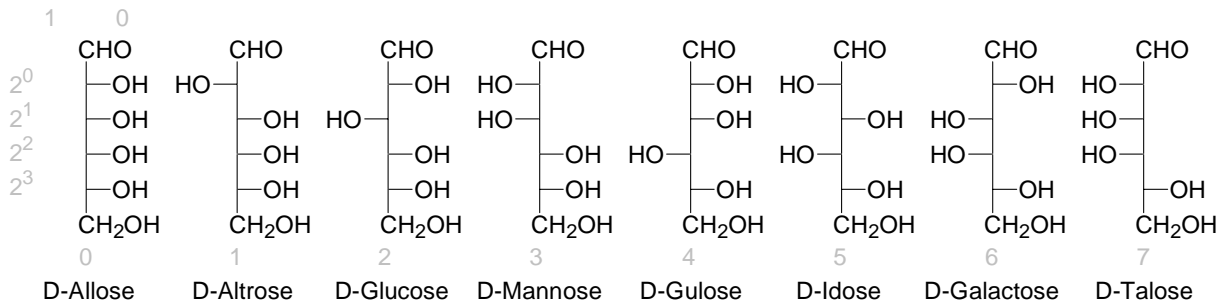
D-Arabinose



D-Xylose



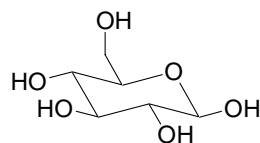
D-Lyxose



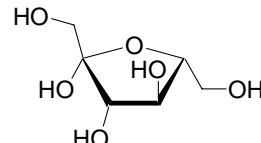
Pyran



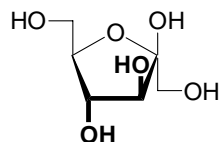
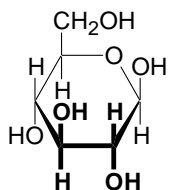
Furan



pyranoside Form



furanoside Form



Keile und fette Bindungen sind nicht essentiell

